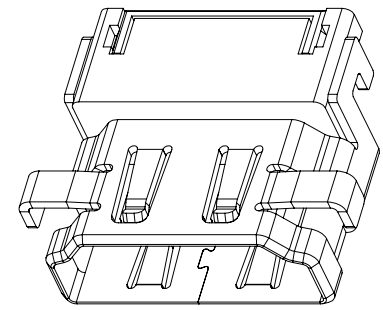
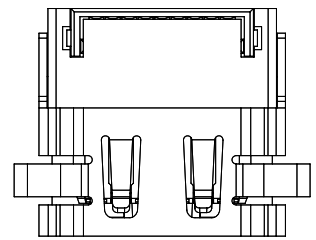
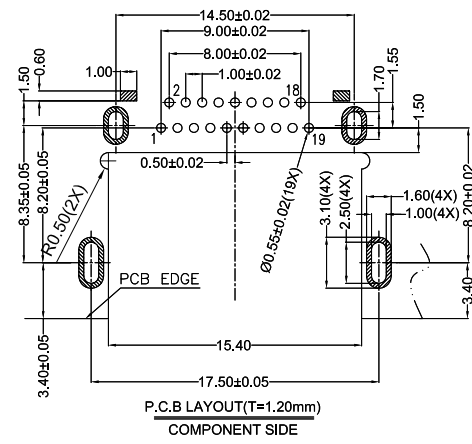
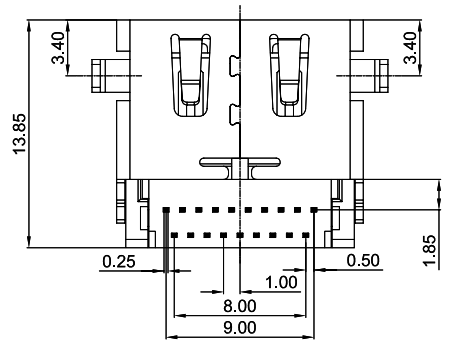
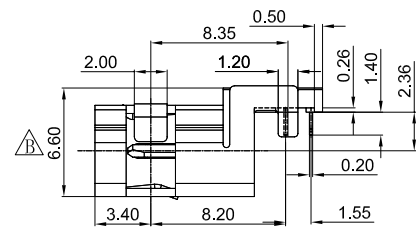
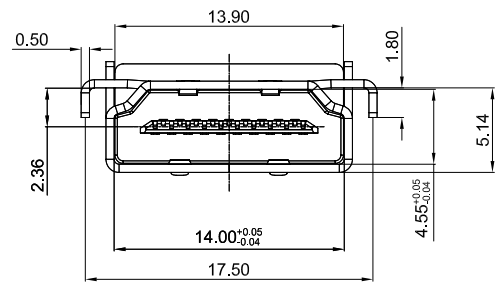


RoHS
HF



NOTES:

- *Material**
Housing&Spacer:LCP, UL 94V-0 Rated;Color: Black.
Shield: Brass.
Plating: Nickle(40~80u") Plating .
Contact: Brass. Solder Tail.
Plating: Gold Plating Over Nickel(40~80u") on Contact Area; Tin(100~250u") Plating On
- *Electrical Specification**
Operation Voltage: 40 VAC max.
Current Rating: 0.5 Ampere per contact
Contact Resistance: 10 mΩ max.
Insulation Resistance: 100 MΩ min.
Dielectric Withstanding Voltage: 500 VAC
- *Environmental**
Operating Temperature: -25°C to +85°C



Pin No.	Signal Name	Pin No.	Signal Name
1	TMDS Data2+	11	TMDS Clock Shield
2	TMDS Data2 Shield	12	TMDS Clock-
3	TMDS Data2-	13	CEC
4	TMDS Data1+	14	Reserved (in cable but N.C. on device)
5	TMDS Data1 Shield	15	SCL
6	TMDS Data1-	16	SDA
7	TMDS Data0+	17	DDC/CEC Ground
8	TMDS Data0 Shield	18	+5V Power
9	TMDS Data0-	19	Hot Plug Detect
10	TMDS Clock+		

REV.	REVISION RECORD	DATE	UNIT: MM	GENERAL TOLERANCES		SCALE:1:1	NAME	DATE	PART NO: W-00-6003-1900
A	初版发行	03. 20. 15		LINEAR	ANGLES	APPROVED	Ken	2017. 10. 23	
B	修改塑胶高度	2017. 10. 23	0.0 ±0.25	X'REF ± 6'	DESIGNER	Ken	2017. 10. 23	REV: B	
			0.00 ±0.20	X' ± 3'	DRAWN	Yangyu	2017. 10. 23	SHEET: 1/1	
			0.000±0.15	X'X' ± 2'					

JCTC 苏州伟聚 东莞胜聚 东莞胜蓝 东莞富强
TERMINAL & CONNECTORS
TITLE: HDMI CL-2.36反向沉-5.14H DIP